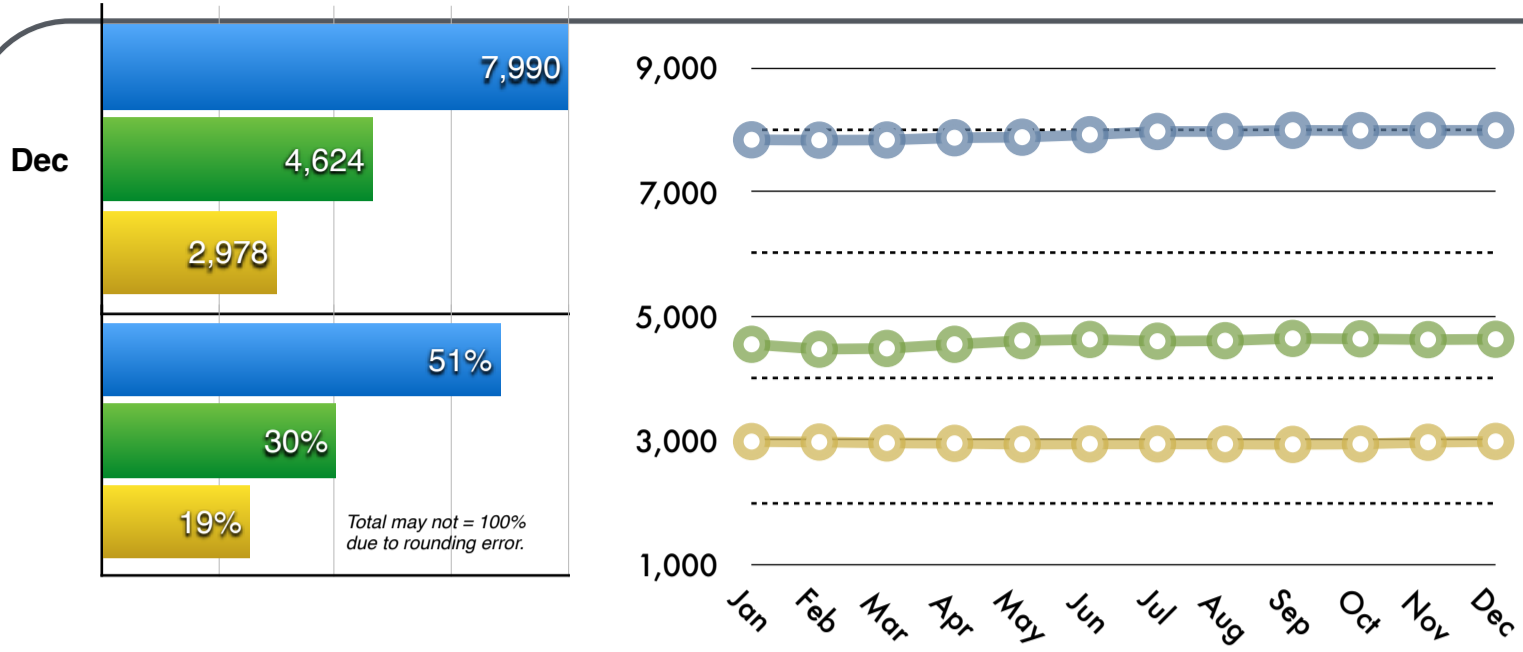
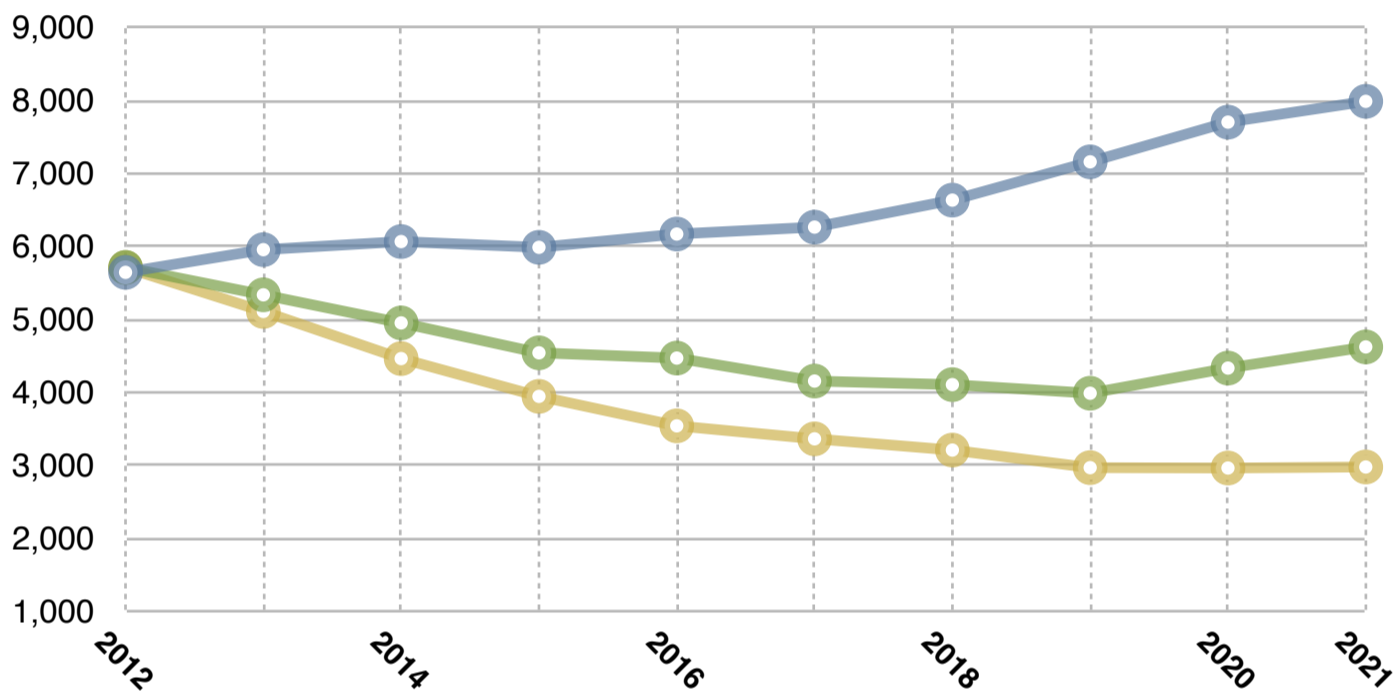


### Enrollment 2021

AmidaCare MetroPlus VNSNY SH



AmidaCare MetroPlus VNSNY CHOICE SelectHealth  
2012-2021 Enrollment



### 2003-2021 Enrollment

Years	AmidaCare	MetroPlus	VNSNY SH	NYPS SH	Total
2003	72	175		99	346
2004	148	266		474	888
2005	215	718		650	1,583
2006	416	1,053		727	2,196
2007	535	1,346		812	2,693
2008	723	2,375		854	3,952
2009	1,448	3,295		1,430	6,173
2010	2,799	4,399		2,805	10,003
2011	4,740	5,532		6,203	16,475
2012	5,646	5,714	5,712		17,072
2013	5,957	5,338	5,110		16,405
2014	6,068	4,953	4,464		15,485
2015	5,989	4,543	3,946		14,478
2016	6,171	4,471	3,542		14,184
2017	6,266	4,156	3,364		13,786
2018	6,636	4,107	3,210		13,953
2019	7,161	3,989	2,969		14,119
2020	7,705	4,334	2,964		15,003
2021	7,990	4,624	2,978		15,592

### 2021 Year to Date Enrollment

	AmidaCare	MetroPlus	VNSNY SH	Total
Jan	7,838	4,543	2,976	15,357
Feb	7,832	4,464	2,968	15,264
Mar	7,835	4,476	2,953	15,264
Apr	7,871	4,543	2,947	15,361
May	7,880	4,601	2,933	15,414
Jun	7,920	4,621	2,938	15,479
Jul	7,972	4,593	2,938	15,503
Aug	7,972	4,601	2,936	15,509
Sep	7,991	4,638	2,930	15,559
Oct	7,986	4,631	2,937	15,554
Nov	7,990	4,618	2,964	15,572
Dec	7,990	4,624	2,978	15,592

Join to the free hivsnp listserv at <https://groups.io/g/hivsnp> for current updates.

Statistics extracted from the NYSDOH Monthly Medicaid Managed Care Enrollment Report available here: [http://www.health.state.ny.us/health\\_care/managed\\_care/reports/enrollment/monthly/index.htm](http://www.health.state.ny.us/health_care/managed_care/reports/enrollment/monthly/index.htm).